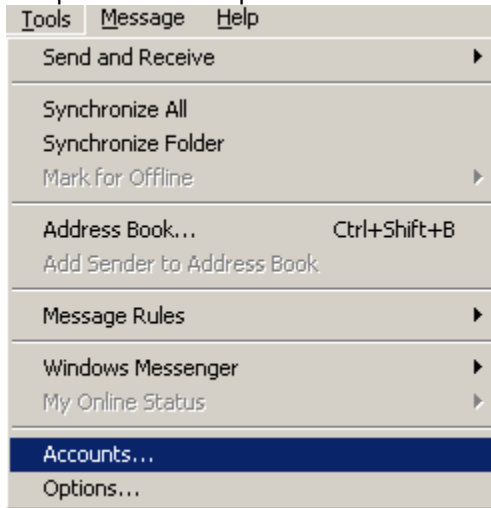


How do I setup Microsoft Outlook Express to receive e-mail using POP3 protocol?

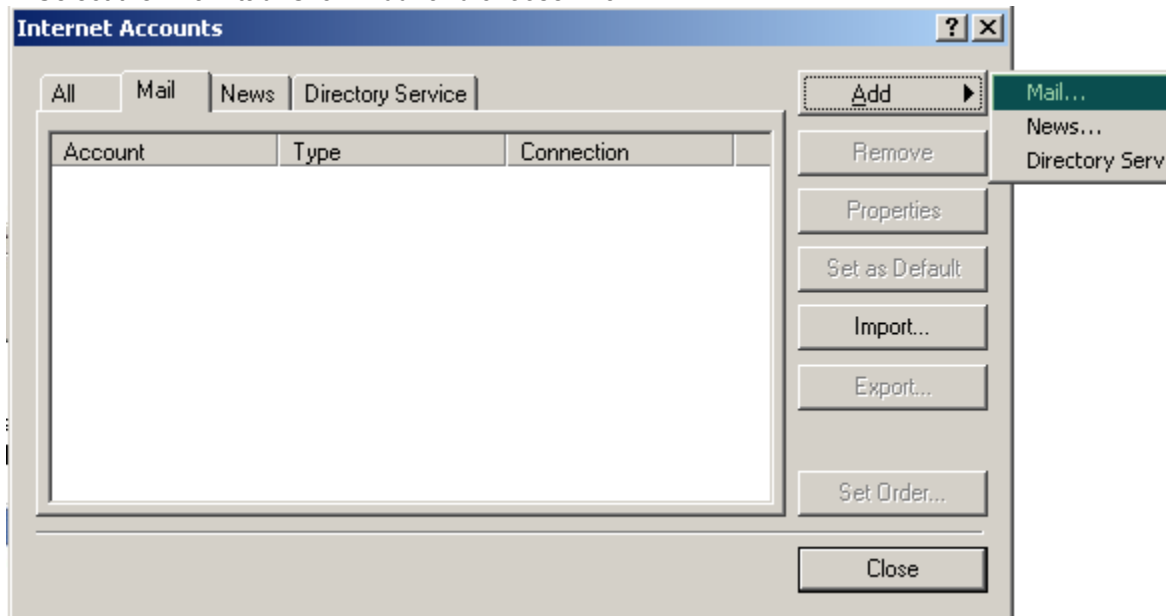
To set up Microsoft Outlook Express you will first have to acquire the necessary information by following the FAQ:

[What information is required to set up e-mail clients for POP3?](#)

1. Open Outlook Express and click "Tools" and choose "Accounts".



2. Select the "Mail" tab. Click "Add" and choose "Mail..."



3. Enter a Display Name and click "Next".

Internet Connection Wizard [X]

Your Name [Help icon]

When you send e-mail, your name will appear in the From field of the outgoing message.
Type your name as you would like it to appear.

Display name:

For example: John Smith

< Back **Next >** Cancel

4. Enter the e-mail address and click "Next".

Internet Connection Wizard [X]

Internet E-mail Address [Help icon]

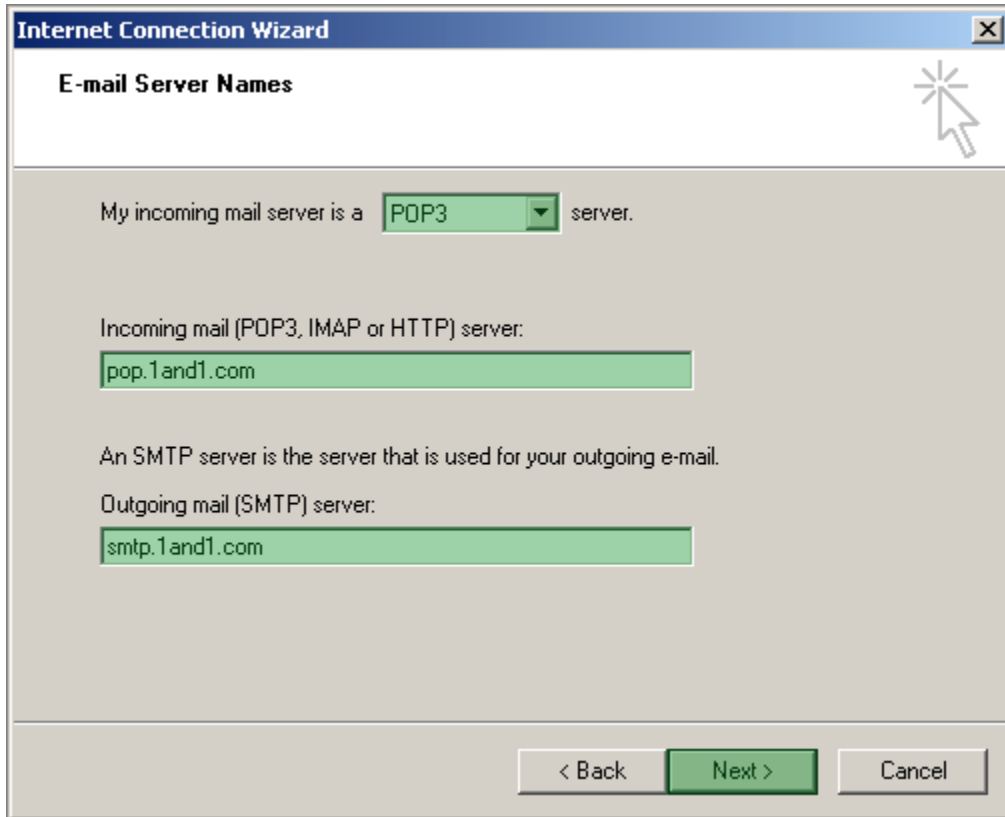
Your e-mail address is the address other people use to send e-mail messages to you.

E-mail address:

For example: someone@microsoft.com

< Back **Next >** Cancel

5. Choose "POP3" and enter the following:
Incoming mail: pop.1and1.com
Outgoing mail: smtp.1and1.com
and click "Next".



The screenshot shows a window titled "Internet Connection Wizard" with a close button in the top right corner. The main heading is "E-mail Server Names". Below this, there is a dropdown menu set to "POP3" with the text "My incoming mail server is a" on the left and "server." on the right. Underneath, the text "Incoming mail (POP3, IMAP or HTTP) server:" is followed by a text input field containing "pop.1and1.com". Below that, the text "An SMTP server is the server that is used for your outgoing e-mail." is followed by "Outgoing mail (SMTP) server:" and another text input field containing "smtp.1and1.com". At the bottom of the window, there are three buttons: "< Back", "Next >" (highlighted in green), and "Cancel".

6. Enter the Account name. If you want the system to remember the password, check the box near "Remember Password" and enter the password. Click "Next".

Internet Connection Wizard [X]

Internet Mail Logon [Help Icon]

Type the account name and password your Internet service provider has given you.

Account name:

Password:

Remember password

If your Internet service provider requires you to use Secure Password Authentication (SPA) to access your mail account, select the "Log On Using Secure Password Authentication (SPA)" check box.

Log on using Secure Password Authentication (SPA)

< Back Next > Cancel

7. Finally click "Finish".

Internet Connection Wizard [X]

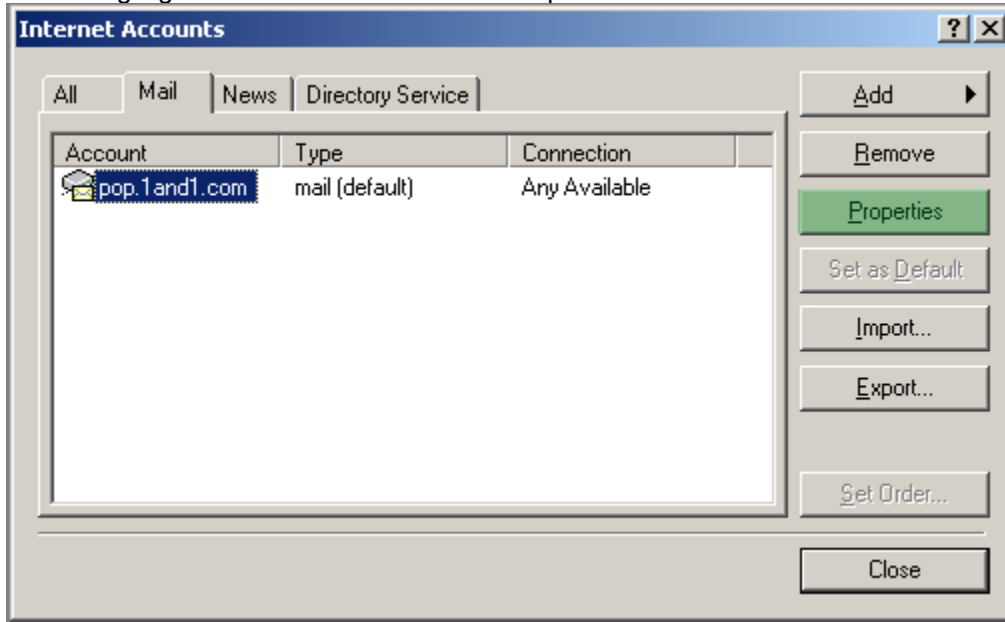
Congratulations [Help Icon]

You have successfully entered all of the information required to set up your account.

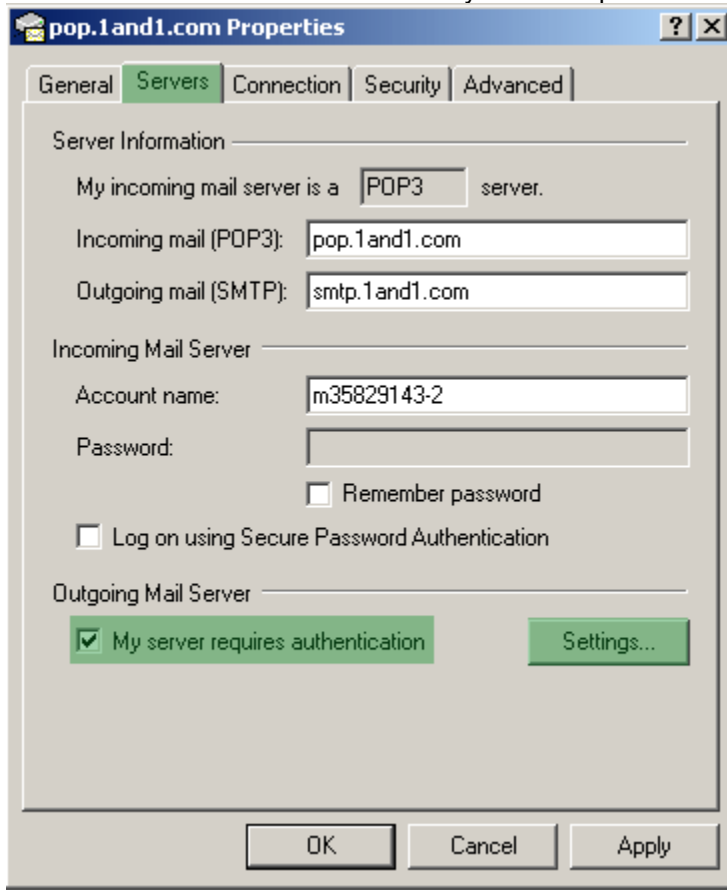
To save these settings, click Finish.

< Back Finish Cancel

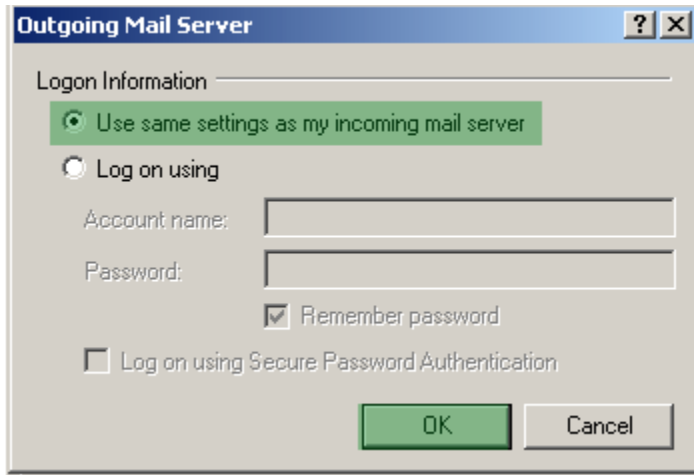
8. Now highlight the account and click on "Properties".



9. Choose the "Servers" tab. Check "My server requires authentication". Click "Settings".



10. Choose "Use same settings as my incoming mail server" and click "OK".



Finally click "Apply" and "OK" and close the "Internet Accounts" window.